



# Maison&Objet Design Award China

## 2021/2022 Maison&Objet Design Award China

---

MAISON&OBJET Paris is the world's leading platform, and since its inception, the show has spared no effort to promote the global design industry and to identify and provide opportunities for design talent to develop.

In 2019, MAISON&OBJET with local partners in China as AUBE EVENTS, an event and PR company have established an international design award - MAISON&OBJET Design Award China in order to bring Chinese Design to the international stage and help more Chinese designers gain worldwide attention and exposure.

The award committee has been following the concept of "Explore good design, Create better life", focusing on the rapidly developing Chinese design, discovering outstanding design talents, giving them the opportunity to showcase their talents and make connection with professionals from all over the world in this industry.

Unique value system "exhibition, learning,  
research, production and distribution"

---

MAISON&OBJET China Design Award is committed to linking industrial resources, channeling China's design power into the industry, combining the value system of "exhibition, learning, research, production and distribution", and supporting the incubation of innovative ideas into product and brand development. It's aimed to promote Chinese design in the global design field, realize innovative creations and build a sustainable design industry ecosystem.

Since its establishment, the award has received strong support from Chinese and French governments, university experts, media, home furnishing brands, real estate groups, etc., With all this effort, we could deliver a better lifestyle and improve the quality of life.



## The Jury

MAISON&OBJET and AUBE EVENTS invited 11 experts to serve as the jury, from related fields of design who have a multidimensional understanding of contemporary design industry in China and who has made contribution to this field in China:

Rossana Orlandi: Contemporary Design Gallerist

Marc Partouche: General Secretary of Association Internationale des Critiques d'Art, Former Director of The École Nationale Supérieure des Arts Décoratifs

Pierre Favresse: Global Design director of L'Oréal Group

Thomas Dariel: Designer, Founder and lead designer of Dariel Studio

Isabelle Stanislas: Interior Designer, Founder of Isabelle Stanislas architecture Studio

Ben WU: Interior Designer, Founder of WS Group

Xiaojie ZHU: Product Designer, Founder of Opal

Jeff Dayu SHI: Product Designer, Founder of DragonFly

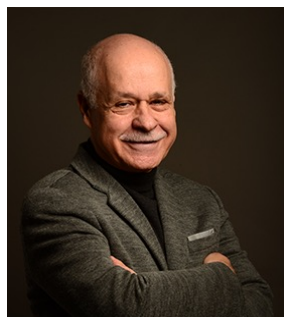
Emma CHEN: Vice President of the International Organization of Folk Art

Yoko CHOI: China Editor of Wallpaper Magazine, Design Writer

Mario TSAI: Product Designer, Maison&Objet Rising Talent Award 2019



Rossana Orlandi



Marc Partouche



Pierre Favresse



Thomas Dariel



Isabelle Stanislas



Ben WU



Xiaojie ZHU



Jeff Dayu SHI



Emma CHEN



Yoko CHOI



Mario TSAI

# The Winners

## 6 Gold Winners

### Professional Group:

- Furniture: Huachen XIN
- Home decoration/ Creative Goods: Caroline CHENG, Karl YIN
- Residential Design: Murphy
- Hotel Design: Wei ZHANG

### Student Group:

- Furniture: Jingyong HUANG, Hongying XIA, Wenqi LI, Zhiru LI
- Theme Design: Xiaotong GU, Siyi XIE

## 1 Special Jury Award

### Student Group:

- Home decoration/ Creative Goods: Litong Zeng, Jingyi Li

## 11 Silver Awards

### Professional Group:

#### Furniture:

- Jinghua ZENG
- Kefei ZHANG, Huizi ZHANG

### Home decoration/ Creative Goods:

- Yunhan WANG, Yi ZHANG
- Dawei LIU

### Residential Design:

- Hui OUYANG
- Hui ZHANG, Nian TIAN

### Hotel Design:

- Lei SHI
- Han AO, Yun TANG

### Student Group:

#### Furniture:

- Jun WANG

### Home decoration/ Creative Goods:

- Minyan LUO

### Theme Design :

- Xinyi ZHANG, Yu ZHU, Zehao LU, Wenhui QU, Shuangyi WU, Shuangshuang QIAN

## 13 Bronze Awards

### Professional Group:

#### Furniture:

- Baohong SHEN
- Hui ZUO

### Home decoration/ Creative Goods:

- Xuanrong ZHANG
- Yue ZHANG

### Residential Design:

- Shipeng DENG
- Zhifeng ZHAO

### Hotel Design:

- Yongna SHENG
- Yanna ZHAO, Lijie XU, Gangrong HU

### Student Group:

#### Furniture:

- Yifu HOU
- Yuchen TIAN, Xue GAO, Shan HUANG, Xinya CHAI, Jiayuan SUN

### Home decoration/ Creative Goods:

- Wenying WANG
- Yuyang XU

### Theme Design :

- Xueying LIAO, Sijie WANG

## GOLD: Professional & Student

### Award Category

- Product Design (Professional & Student)  
A1 - Furniture (Living room / Bedroom / Bathroom / Kitchen)  
A2 - Home decoration/ Creative Goods

- Interior Design (Professional only)  
B1 - Residential Design  
B2 - Hotel Design (Including restaurant design / room design / spa design)

---

### 6 Gold Winners

Six gold winners for Edition 2021-2022 (four from professional group; two from student group) :

#### Professional Group:

- Furniture: Huachen XIN
- Home decoration/ Creative Goods: Caroline CHENG, Karl YIN
- Residential Design: Murphy
- Hotel Design: Wei ZHANG

#### Student Group:

- Furniture: Jingyong HUANG, Hongying XIA, Wenqi LI, Zhiru LI
- Theme Design: Xiaotong GU, Siyi XIE

## Product design-Professional Furniture

---

Huachen XIN

Huachen Xin, Graduated from the Royal College of Art in 2017 with a Master degree of Product Design.

He has worked in the Jacob Jensen design studio in Denmark. And in 2018, he founded the SIDE furniture brand and served as the design director. His works have won Red Dot Award, IF award, Dezeen Award, DIA, Golden Dot Award, etc.

In 2020, he was named the Design Star of the Year by AD Magazine.



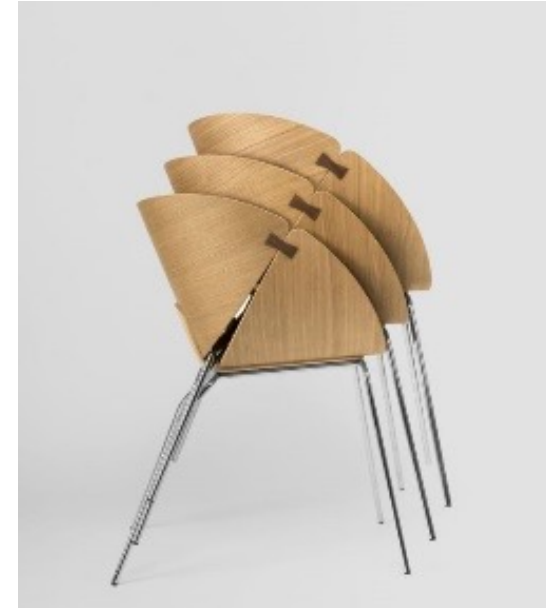
---

## Ginkgo Chair

The Ginkgo Chair is a plywood chair designed for both domestic and public uses.

The seat and back are come out of the same mold and connected with butterfly tenons.

The gap between two plywood boards allows legs to come through and makes the chair stackable.





## Product design-Professional Home decoration

---

Caroline Cheng, Karl Yin

Caroline Cheng has been working in clay for over 35 years and is the owner of the Pottery Workshop in China. Caroline tries to be environmentally sustainable at home, work and play. She has made all departments at the Pottery Workshop come up with solutions to cut down carbon emissions, and tries not to buy things at a whim.

Karl Yin is a designer and materials researcher. In 2015, Karl had an idea to use the ceramic wastes produced around the studio to make new products. He went on to Central St Martins in 2017 to do his master's in ceramic design, further researching the possibilities of recycling ceramic waste. His research has taken a big leap in making ceramic waste a viable new material.

Upon his return in 2019 to China, Karl and Caroline set up the now new Yi Design Company to focus solely on this goal of finding a solution for all ceramic waste.





---

## YiBrick

The design is to solve the problem of ceramic waste management and research the possibilities of creating 100% recycled ceramic materials; to produce in large scale quantity to take care of all the wastes; to promote the idea of regenerating recycled ceramics in China and all over the world.

YiBrick is a permeable material that can be used as pavement for sponge cities, improves the ecological environment and biodiversity, alleviating waterlogging problems, water resources shortage, and urban heat island effect. It contains over 90% recycled ceramic, locally invented and made in China, where 18 million tons of non-degradable ceramic waste are produced every year.



## Interior design-Professional Residential design

---

### Murphy

Murphy graduated from the Department of environmental art of Zhejiang University of technology in 2014.

At the beginning of the 2019, she established her own design studio Murphy Design Studio, which is mainly for residential interior design.

Although it has been established for a short time, it has been affirmed by some well-known media and design platforms.

The design works have been published in media magazines and media platforms such as home Gallery, Yitiao, scream design, fashion home, etc.

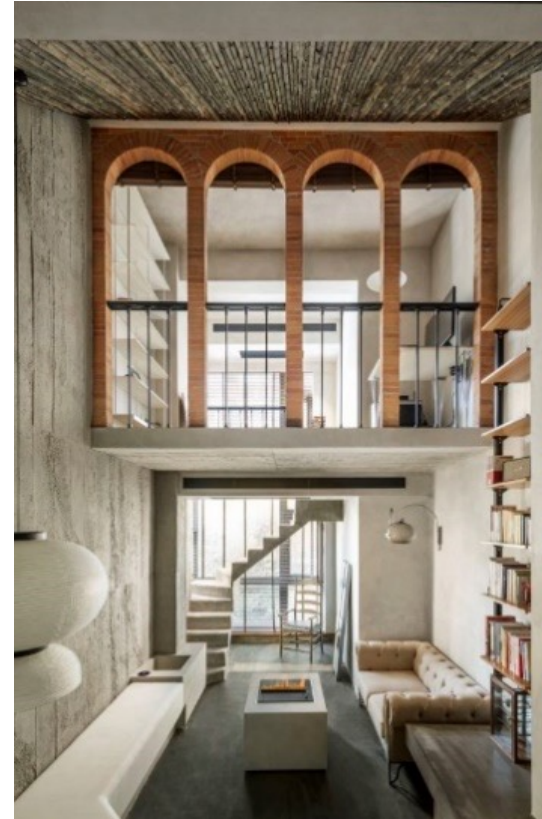


---

## Home

A natural home should be kept restrained, it could be less than perfect, even rough, and the designer chose to embrace natural materials, lightly processed or even raw materials.

The materials chosen for the whole house are also common materials, but the way they are used has been changed. For example, the tiles on the roof are used on the ground, and the stone resistant polyurethane panels are more often used outdoors, but the designer used them indoors and added some plants to create a home where people can enjoy themselves.





## Interior design-Professional Hotel design

---

Wei ZHANG

As General manager and Design Director of Xiamen One Horizontal and One Vertical Design Studio, Wei ZHANG provides simple, multivariant and tasted design. He is good at combining space structure and functional characters, achieving the best design by using the least change, making full use of space characters.

Well-known for “only give the most reasonable design”, he has gained a lot of appraise from the people in the same industry



## Fujian Banquet

The design of this restaurant brings it back to the nature and restores local customs and practices with sands, stones and soils, creating field temperament with restrained expression and pure materials.

Inspired by Chinese style tenon-and-mortise work, the atrium of Fujian Banquet divides the dining area into two separately, the dining table keeps its propriety in intimacy, forming a free flow of density.

The soul of the space lies in the selection of materials. The traditional southern Fujian red brick originated from the clay and has fire appearance, which has mellow color and looks like the hometown of the countryside.

The wooden fence is like a barrier or a hill. It has separated the years and precipitated the details. A curtain of falling rain, and the sensation in the clear sound resides in the time of space. The pioneered service-based middle corridor design separates the food delivery route from the passenger path, the double-layered metal door plays an important role, which ensures the privacy and experience of the guests.



## Product design-Student Furniture

### Gentleman Chair

Jingyong HUANG, Hongying XIA, Wenqi LI, Zhiru LI  
Guided by Professor: Zhenyi CHEN

Inspired by the Chinese. traditional arm-chair, this design team of Wuyi University created Gentleman chair to show the oriental elegant aesthetic.

In terms of material selection, reference is made to the sceneny, traditional customs and murals with oriental charm. Finally, this soft fabric (silk or yarn) is adopted and the traditional sky cyan is given to further strengthen the Oriental temperament of the chair.

The design inspiration of the chair in sleeves shape first comes from the Chinese traditional arm-chair, and then from the Chinese clothing culture. Seats and clothes are two important aspects that can reflect the norms of social etiquette. The combination of the two makes the design have a significant Oriental attribute in the design language.





## Theme design-Student

### Station in the Desert

Xiaotong GU, Siyi XIE

The project is designed by a student design team that pursues purity and precision, from Jinling Institute of Science and Technology.

Located in Dunhuang, the origin of the "Belt and Road", and at the same time, the natural scenery of the desert is introduced into today's design and innovated, and a "station" is designed for the interaction between China and the world.

With minimalist design expression methods, mixing and matching the stylistic characteristics of the aesthetics of silence, adhering to the sustainable design concept, outlining rational straight lines and enthusiastic curves, and bringing dynamic changes to the space, the minimalist design aesthetics are also exerted to the extreme in the space, creating a space with an artistic sense and a sense of experience.

The indoor space rationally uses local natural elements and regional decorative materials, so that people can feel the artistry of the desert space in the environment in their leisure time, enjoy the natural beauty of the desert, and convey the "Belt and Road" culture to people, integrating Dunhuang cultural elements into modern life and local tourism development.



## Product design-Student Home decoration

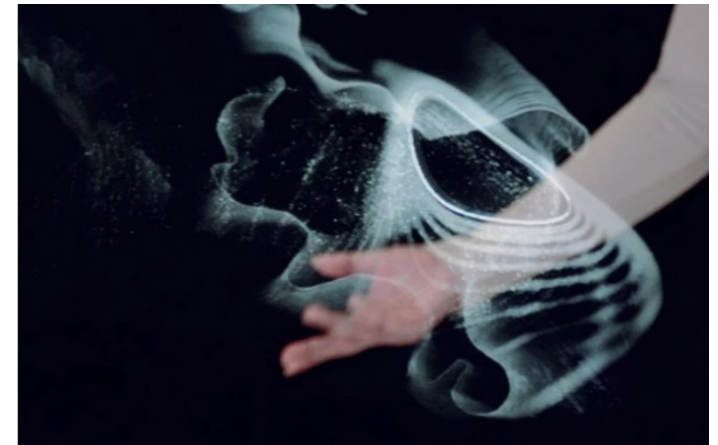
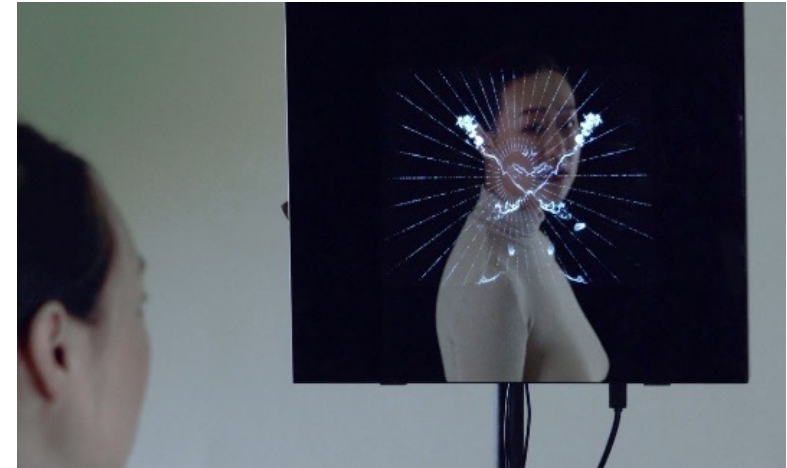
### Interactive Mirror

Litong ZENG, Jingyi LI

Both undergraduate of Craft Art (Fibre Art) of Tsinghua University, this design team want to explore the possibility of interactive narrative in their creation.

This work is composed of three interactive parts. It aims to reproduce young people's feelings about non-daily rituals and mysterious experiences, assist participants in meditation and relieve their anxiety.

The facial interaction part uses facial recognition technology, so that the audience is looking at themselves while looking at the constantly changing graphics. In this process, the body and mind are relieved and the pressure is relieved. The hand interaction part is like ripples and clouds, which are constantly pulled and moved by hand movements. The interactive part of the legs follows the walking trajectory of the audience and grows lines. The closer the audience is, the denser the lines.



## SILVER: Professional

### Award Category

- Product Design (Professional)  
A1 - Furniture (Living room / Bedroom  
/ Bathroom / Kitchen)  
A2 - Home decoration/ Creative  
Goods
- Interior Design (Professional)  
B1- Residential Design  
B2 - Hotel Design (Including restaurant design  
/ room design / spa design)

---

### 8 Silver Awards

#### Professional Group:

##### Furniture:

- Jinghua ZENG
- Kefei ZHANG, Huizi ZHANG

##### Home decoration/ Creative Goods:

- Yunhan WANG, Yi ZHANG
- Dawei LIU

##### Residential Design:

- Hui OUYANG
- Hui ZHANG, Nian TIAN

##### Hotel Design:

- Lei SHI
- Han AO, Yun TANG

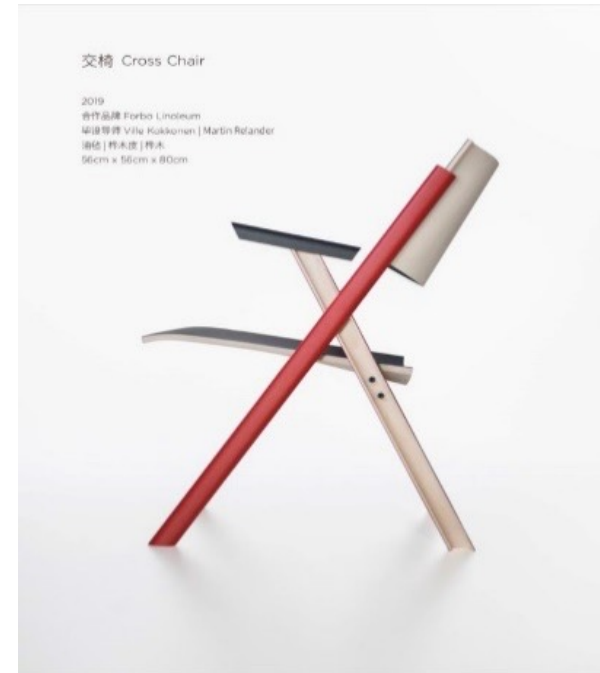


## Product design-Profession Furniture

### Cross Chair Jinghua ZENG

Jinghua Zeng has Master Degree of Design from Aalto University in Finland. Her Chinese cultural background and Nordic design experience are intertwined to form her design language. Zeng's creation is based on observation and contemplating in life and nature. By sensing the subtlety of materials and crafts, she hopes to bring people timeless experiences.

"Cross Chair" is an easy chair that is constructed with the basic element of cross semi-tubes laminated by linoleum and veneers. Among the standard elements created by the various tests, the cross structure by inserting two semi-tubes crosswise was both lightweight and stable for furniture construction. Therefore, it's used in the chair design that requires high stability of structure. In order to get better structure and proportion, two prototypes were developed from simple sketches through successive experiments.



## Product design-Profession Furniture

### "Fluid-Emma" chair Kefei ZHANG, Huizi ZHANG

"Kefei Studio" started in 2016, covering furniture, lighting and decoration design. The design team insists on the concept of revering nature, finding the essence behind the oriental culture through the interpretation of nature and aesthetics, allowing modern design to cross the boundaries of region, language and culture, and integrating art into home life.

"Fluid-Emma" chair is a leisure chair with smooth lines which is like an elegant and graceful lady. The back of the chair is upright and dignified on both sides. The back legs of the chair support the backrest and the seat surface, and the shape flows and twists, which perfectly integrates with the curve of the human body. On the premise of ensuring a comfortable sitting posture, the work presents different flowing forms from multiple angles. The design team has injected the oriental culture into the creation. On the basis of modern simplicity, it has an oriental charm. The core of the work is to express the power of contemporary women.



## Product design -Profession Home decoration

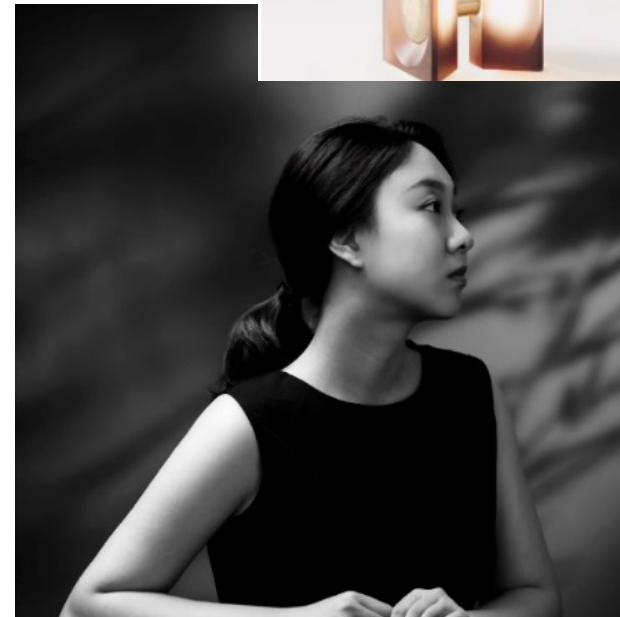
### Ice lantern

Yunhan WANG, Yi ZHANG

Dorisofia Studio, founded in 2019, is an independent studio that focuses on furniture design, product design, space design, and installation design. During the studies in Central Academy of Fine Arts, the designers have been exposed to various materials and their techniques, such as woodworking, ceramics, glass, and metal. They strike a balance between commercial values and artistic expressions and create more elegant and vivid design works.

“Ice lantern” is both a side table and a floor lamp as well. The light is embedded in it, and the light turns to be soft and changeable through refraction and scattering by the translucent frosted material, which is like the colorful ice lantern in childhood memory.

The thickness of the table leg changes between the straight line and the arch, and the color of the resin material becomes darker or lighter accordingly, so as to form a natural gradual effect.



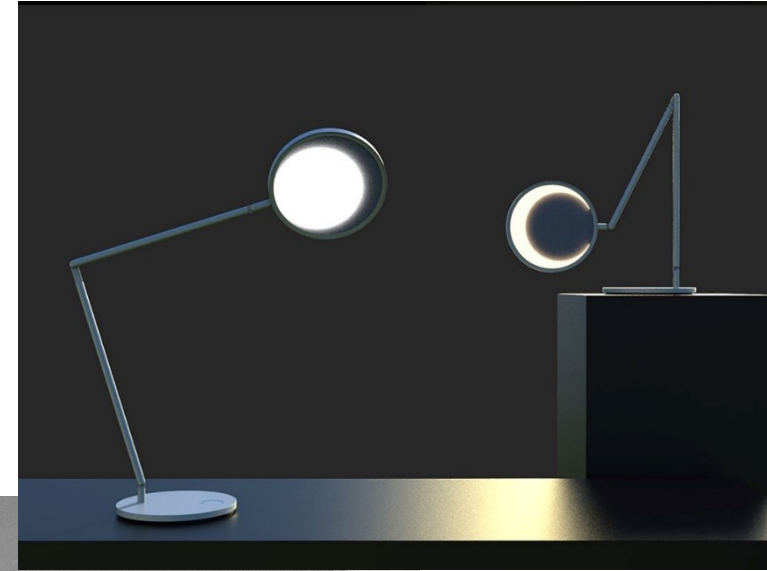


## Product design -Profession Home decoration

### Crescent Moon lighting Dawei LIU

David Liu, with his profound professional accumulation and continuous exploration of design innovation, has designed products in many fields in recent years, including furniture, jewelry, lighting, tea sets, lacquerware, cultural innovation and so on. The cumulative number of designs exceeds 8000, and dozens of appearance patents and utility models have been applied for.

The Chinese nation always had special feelings for the moon, and the moon has become a typical image and eternal theme in literature. The designer applies the element of “crescent moon” to the table lamp to express our love for the moon night. The product adopts dual light source modes. As a decorative aesthetic night lamp, it is like a bright crescent moon to accompany you to sleep. The rotating shaft of the product rotates up and down, and the lamp disc rotates left and right.



## Interior design-Profession Residential design

### Star Trek Hui OUYANG

Yan design was founded in Shanghai in 2004. Great research and design has always maintained its original intention, made design with a research attitude, and committed to the high integration of space and art.

In the context of the new low-carbon economic development, the development of the global building materials industry tends to be green and sustainable. The material selection in this project "Star Trek" is mean to reduce pollution, recycling, to achieve the organic unity and optimal allocation of resources and materials.

The overall color system is mainly light color system to reduce light pollution. Finished metal, texture paint, latex paint and glass are all renewable resources. Through the use of low-carbon materials, people's concept of environmental protection is enhanced and the concept of green and harmonious development is promoted.

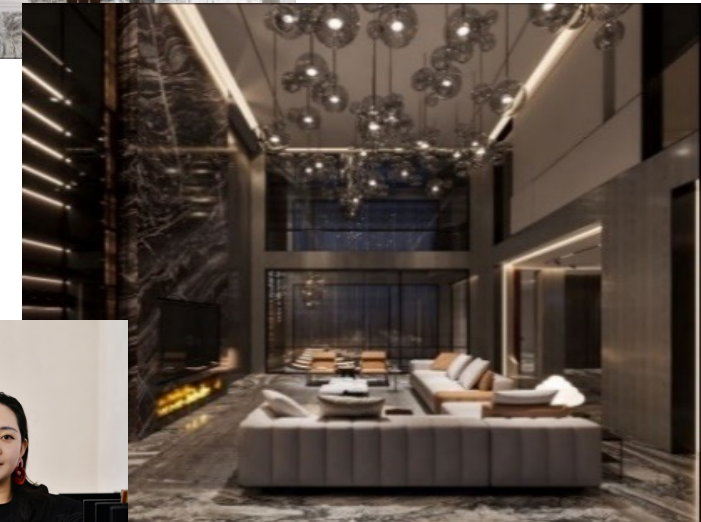


## Interior design-Profession Residential design

Poly Philippe  
Hui ZHANG, Nian TIAN

Simple and elegant white, simple and pure, quiet and elegant, full of personality, and give a person with a lot of imagination space. White, gray, aureate delicate combination, fashion highlights individual character again, below the irradiation of downy lamplight, of whole space changes more style and temperament, become by nature. Full of poetry, full of warm and pleasant atmosphere, people can enjoy the quiet atmosphere of life.

Simple lines tell the story of the real eternal classics, separated from all flashy and impractical, starting from the essence of life, with a minimalist design interpretation of the most essential light luxury aesthetics. Pursue a low-key state, and it is not cumbersome. Not to walk in the front end, not to show off praise, but to enjoy the beauty of life.





## Interior design-Profession Hotel Space

Hotel IFS-State Finance Center

Lei SHI

YI SHI SHU Space Design Office, founded in October 2016, is a high-end design service agency specializing in full-case design services. According to the needs of different spaces and customers, we provide customers with one-stop services of consultation, design, procurement, and layout, tailor-made unique home products, professional design from the overall style, and comprehensively shape the image and details of the living room. It fully reflects the nature and taste connotation of different spaces.

This case is located in the State Finance Center. In the seemingly ordinary space, we outline our attitude towards art aesthetics and understanding of different use scenarios in a simple way. Simple layout, flexible transformation, with common materials and beloved collections, the design allows the club to break the space constraint and follow the heart with boundless art.



## Interior design-Profession Hotel Design

### BEIJING YAN RESTAURANT Han AO, Yun TANG

Han AO and Yun TANG are co-founders of Beijing H.T Landscape Indoor Design Co., Ltd.

By mixing the traces of the great Tang and creating meaningful spaces, The Beijing Parade blends cultures, arts, commerce and trade, and peoples. The design here traces the bygone memories along the Silk Road and revisits the historical milestone of the great international interaction and integration.

The designers paid homage to ancient Chinese by designing living scenes with a human touch to reproduce the world of the Tang people and create a Belt and Road-themed restaurant that blends feasting styles.



## BRONZE: Professional

### Award Category

- Product Design (Professional)  
A1- Furniture (Living room / Bedroom / Bathroom / Kitchen)  
A2 - Home decoration/ Creative Goods
- Interior Design (Professional)  
B1 - Residential Design  
B2 - Hotel Design (Including restaurant design / room design / spa design)

---

### 8 Bronze Awards

#### Professional Group:

##### Furniture:

- Baohong SHEN
- Hui ZUO

##### Home decoration/ Creative Goods:

- Xuanrong ZHANG
- Yue SUN

##### Residential Design:

- Shipeng DENG
- Zhifeng ZHAO

##### Hotel Design:

- Yongna SHENG
- Yanxia ZHAO, Lijie XU, Gangrong HU



## Product design-Profession Furniture

### CHU YUN 1 Table

Material: Brushed stainless steel with TaiLox-Black coating, belongs to the hard alloy steel family, which most commonly used in high-technology and in aerospace and chemical industrial, where maximum resistance to corrosion, scratch and fingerprint in essential.

Chu Yun I Table is an explorer product. It's paralleled to U+ previous products which were basically completely dependent on wood. It shows designer's ideas and thinking about this era. Shen Baohong believes that the emergence of new materials and composite materials can definitely help designers make breakthroughs in contemporary design.

### Baohong SHEN



Hui ZUO



### Home Furniture by coffee waste

Zuo Hui is founder of HomeQ furniture brand and Director of Zsmartdesign Design. Rooted in the cultural concept of Chinese avant-garde fashion furniture, she reabsorbs and promotes the surrealist style, and loves the new efficient and simple assembly techniques.

The designer succeeded in making a set of small furniture with coffee grounds as the main raw material. This series is made of more than 50% waste coffee grounds + recyclable PP material and adopts batch injection molding production process. The furniture produced in this way is not only beautiful and durable, but also environmentally friendly. Moreover, the prices are affordable and can be accepted by more of the ordinary families.

## Product design-Profession Home decoration

### R51 Teapot

Material: made of purple clay natural mud taken from Huanglong Mount in Yixing Capacity: Inheriting the classic shape of Tang Yu pot (also known as side-handle pot), R51 has a simple and restrained outline without grandiosity. Its shape changes from a line to a plane, from a square to a circle, which is an integration of organics and order.

R51 is also a product, combining the best of modern technology and traditional handicraft: unexpected changes are realized by computer algorithms, and the scales and details are controlled by artificial skills.



Xuanrong ZHANG



Yue SUN

### DOVI Lighting

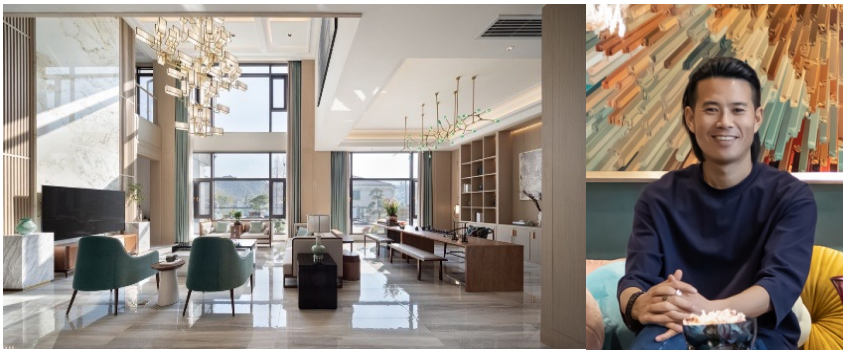
The design concept of DOVI comes from the inspiration of [Metaverse]. It is a lamp with a minimalist appearance and full of futuristic sense of technology. The function includes black technology to help sleep. There is 2000mAh lithium battery inside; Long-lasting battery life of 5.5~24h; Type-C charging interface. With magnetic structure, it can be 360-degree rotating so that the light can to every angle. Drilling hole and connecting the cable in the wall is unnecessary. Just only need to stick the base on the wall, the lamp can be easy to take away and put it back.

## Interior design-Profession Hotel Design

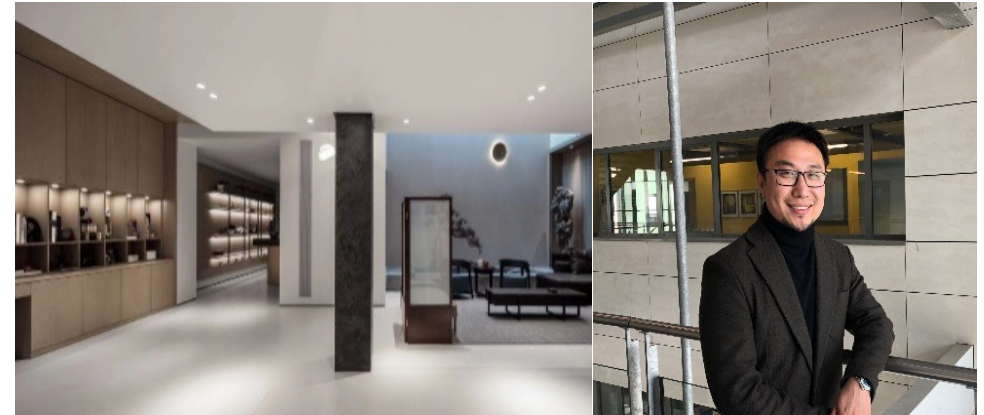
### Spatial Artistic Conception

Deng Shipeng is the senior creative designer of ShangCeng Decoration.

This project is located in the village of Jingshan. The exterior architectural style uses a combination of the horse head wall of Anhui southern Anhui Huizhou architecture and modern minimalist style, and the courtyard uses water features to increase the flexibility of the house, while the interior follows the modern Chinese style of the exterior, using modern techniques and Chinese landscape to reflect the elegant Zen space of Jiangnan, China. The interior decoration does not deliberately use symbolic Chinese shapes, but uses natural stone and soft decoration to reflect the introverted oriental Zen tea and elegant cultural atmosphere.



Shipeng DENG



Zhifeng ZHAO

### Jiangnan Mountain Residence

Associate professor, Director of product design department of Suzhou University School of Art, Founder of CHY design.

To design is to reflect one's most honest self, the design outcome is the direct result of value and thoughts. This residence is his own residence, it is more about thinking about his future life and his relationship with his family, which means It is not about the material, it is not about the style.

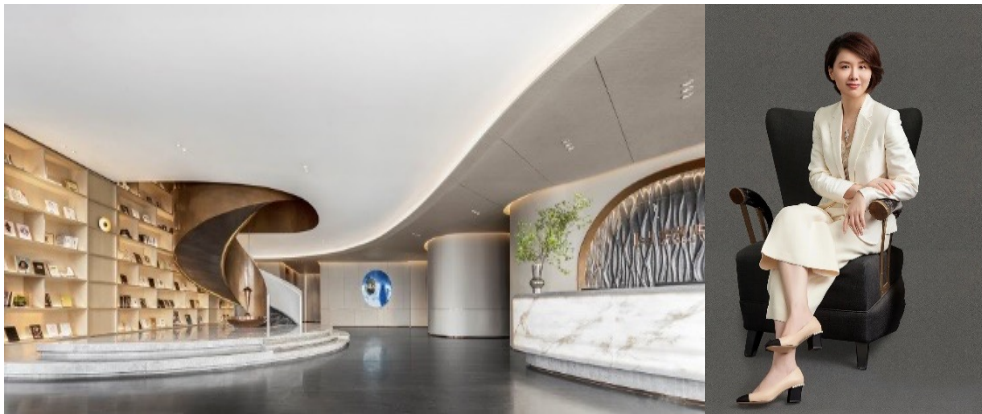
From the environment to architecture, this residence is a specific display of the modern Oriental family lifestyle.



## Interior design-Profession Hotel Design

### Jinhui World City Marketing Center

Living with the sea is a kind of luck in life. Jinhui World City is located in Lianyungang Bay, with a first-line coastal landscape belt. Seredip Space focuses on the romance of the stars and the sea as inspiration for a space rhythm, translates the mystery, purity and tranquility of the dreamy sea into a romantic space poem, condenses the timeless space imagination, and reflects the nature and texture of the city through simple design.



Yongna SHENG



### JIALE Hotel

The design of the hotel is mainly spread out with the aesthetics of "Zen rhyme", following the simple description of the scene, and constructing a minimalist divinity. Stepping into the lobby, the landscape falls into the water. We abandoned the natural methods of the past and adopted a square pool to construct the landscape, which turned the scene from nature to art, and achieved a delicate balance between space art and commercial value.



Yanxia ZHAO  
Lijie XU  
Gangrong HU

## Silver & Bronze: Student

### Award Category

- Product Design  
A1 - Furniture (Living room / Bedroom / Bathroom / Kitchen)  
A2 - Home decoration/ Creative Goods

---

### Silver Awards

- Furniture: Jun WANG
- Home decoration/ Creative Goods: Minyan LUO
- Theme Design :
  - Xinyi ZHANG, Yu ZHU, Zehao LU, Wenhui QU, Shuangyi WU, Shuangshuang QIAN

---

### Bronze Awards

- Furniture:
  - Yifu HOU
  - Yuchen TIAN, Xue GAO, Shan HUANG, Xinya CHAI, Jiayuan SUN
- Home decoration/ Creative Goods: Yushi Zhang
  - Wenying WANG
  - Yuyang XU
- Theme Design :
  - Xueying LIAO, Sijie WANG

## Product design-Student Furniture

### Spark Sofa

Jun WANG

M.A. in Integrated Product Design, Politecnico di Milano, Base in Milan, He has served as the design director of cloud power technology and the industrial designer of Haier innovation design center. He established his own design studio in 2018 and carried out new product design and R & D for many enterprises and brands in Europe and Asia.

Spark Sofa has smooth, fluid lines and lacks hash edges, a direct result of the procedure that produced this monobloc sofa. Transparent yet sturdy, the polycarbonate material permits resistance to shock and weathering, this feature means the seat can comfortably be used for both indoor and outdoor activities. Also under the dim light, it shows like the beauty of spark.



### Baoboo Lighting

Minyan LUO

Student at Guangdong Baiyun College with major in environmental art. the environmental art is more interesting for her.

She took advantage of the ductility and strong flexibility of bamboo to combine with traditional chandeliers and designed this chandelier with bamboo as the shell material of the lamp and the form of a pull switch.

People can use the subconscious pulling action to drive the bamboo shell of the lamp to shrink down. A unique way of opening the chandelier is formed by extrusion deformation.



The bamboo hand-pulled chandelier can be used as a spotlight when it is closed and can be used as a chandelier when it is opened. It can meet the various daily needs of people using chandeliers in an interesting opening and closing form.

## Theme design-Student

### Community for Elderly

Xinyi ZHANG, Yu ZHU, Zehao LU, Wenhui QU,  
Shuangyi WU, Shuangshuang QIAN

With the development of social economy and science and technology, the future living pattern of human beings will change dramatically. The retired elderly are still passionate about life, and through the research four categories of elderly are listed as the main body to create a community to realize the unfulfilled dreams of their youth.

The space uses spider web evolved hexagonal elements to create a variety of floor plans while the folding and encircling space form creates more connections between indoor and outdoor.



The main structure is echoed by two giant spider webs on the top and bottom, with multiple small movable boxes in the structure, where each living unit can freely collage and choose its living location, neighbors, and external greenery, balconies, and scenes.



## Product design-Student Furniture

This is a modular screen with bamboo weaving as the starting point. The designer sets a rule and method to weave different bamboo sticks together according to the colour. This process is like a jigsaw puzzle game. While looking for the same colour, he inadvertently weaves it, and finally complete the weaving of each group, so as to achieve a complete bamboo weaving module.



Modular Screen With  
Bamboo Weaving

Yifu HOU

Through the combination of each module, people can be close or sparse, open or closed, spliced at will according to their own needs, and finally form an overall screen. In this context, people are willing to spend time weaving new things, mobilising people's interest and activating bamboo weaving. Let bamboo weaving recirculate in life. It reflects the transformation and potential commercial value of traditional bamboo weaving in modern life.



Clamp Chair

Yuchen TIAN, Xue GAO, Shan HUANG, Xinya CHAI, Jiayuan SUN

The clamp chair is inspired by the domestic bowl clip, which has three to four opposite claws inside.

The structure of the existing beach chair is simplified and the form of the surfboard is extracted. The two surfboards intersperse with each other in an "X" shape and there are foldable stakes in the four corners.

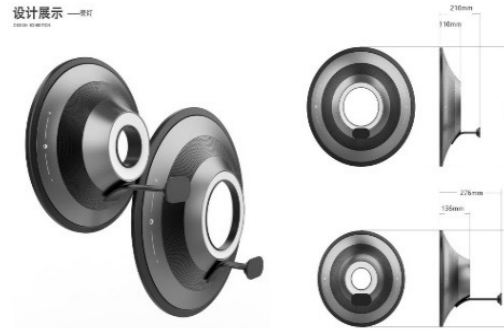
The injection molding production, carrying, and folding are easy. The stakes in the four corners of the clamp chair can be pulled out when they are used to help its main body to be firmly fixed on the beach. The scissors-shaped folded structure is used. It is simple to fold and convenient to store. It can be easily put into the trunk of the car.

## Product design-Student Home decoration

The graduate student of Tianjin Academy of Fine Arts and the major is product design, postgraduate tutor Professor is Weili Li, Research direction is Human-machine Scale and Barrier-free Design Research.

The specific function design of this product:

The use of indirect ultraviolet radiation method, disinfection effect is reliable, can be used in indoor activities. The bottom of the intelligent speaker parts, to achieve multi-function in one, playing soothing music, improve performance. It can touch the button to realize double switch protection of lamp body /APP. Choose different modes such as daily/uv disinfection. The light color temperature can be adjusted to meet the different needs of cold/warm choice. Charging mode: USB charging mode.



Multi-functional Lighting  
Yuyang XU



UV Lamp  
Wenying WANG

## BRONZE: Student

According to the current situation, a lighting product that can simulate outdoor lighting is designed to wake up sleeping people with soft lighting and relaxing music instead of rapid alarm, so that people living in a room without sunlight can feel the comfort brought by light.

This design goal is to design a lighting to solve the problem of demand as the starting point, to improve the emotional experience of users to a greater extent and pay more attention to its functionality.

This lighting product has two front and rear lights. The front light can adjust the light and shade according to the time of sunrise and sunset in a day to help users in a closed living environment to master the general time. The back light is illuminated on the wall and can be used as an atmosphere lamp or wall washing lamp after opening.

## Theme design-Student

---



### Habitat of «No Dust in the Household and Leisure in the Empty room »

Xueying LIAO, Sijie WANG

The design team have adopted a large number of bamboo elements and fair faced concrete with "temperature and emotion". It aims to reflect the communication between people and the environment and create a habitat of "no dust in the household and leisure in the empty room". Make people feel relaxed when they step into it.

Local and natural materials are used to reduce costs and carbon footprint. Bamboo formwork and cast-in-situ concrete are used for the outer wall, and local bricks are exposed for decoration for the inner wall. Ventilated cavities separate concrete and brick walls to protect the interior space from heat.

Create a comfortable space between man and nature, and the trace left by the bamboo formwork on the wall surface weakens the huge scale of the wall. Adding a trace of delicacy to the rigid concrete also echoes with the surrounding natural landscape, coupled with simple glass doors and windows.

# MAISON&OBJET DESIGN AWARD CHINA

## Special thanks to:

Rossana Orlandi: Contemporary Design Gallerist

Marc Partouche: General Secretary of Association Internationale des Critiques d'Art, Former Director of The École Nationale Supérieure des Arts Décoratifs  
Pierre Favresse: Global Design director of L'Oréal Group

Thomas Dariel: Designer, Founder and lead designer of Dariel Studio

Isabelle Stanislas: Interior Designer, Founder of Isabelle Stanislas architecture Studio

Ben WU: Interior Designer, Founder of WS Group

Xiaojie ZHU: Product Designer, Founder of Opal

Jeff Dayu SHI: Product Designer, Founder of DragonFly

Emma CHEN: Vice President of the International Organization of Folk Art

Yoko CHOI: China Editor of Wallpaper Magazine, Design Writer

Mario TSAI: Product Designer, Maison&Objet Rising Talent Award 2019

---

## ABOUT AUBE EVENTS

As a strategic partner of MAISON&OBJET, AUBE EVENTS is the exclusive representative of MAISON&OBJET Design Award China and the organizer of the award, gathering high-quality resources from domestic and international home consumption markets, aiming to provide the industry qualified services, building up domestic and international design exchange channels, and truly realizing the interaction platform between the designers and the industry.



---

## ABOUT MAISON&OBJET PARIS

For 27 years now, Maison&Objet organised by SAFI (a subsidiary of Ateliers d'Art de France and RX France), has been engaging with and bringing together the international design, home decor and lifestyle communities. Maison&Objet's trademark? Its unique ability to generate connections and accelerate business, both during trade fairs and via its digital platform, but also through its unique talent for highlighting trends that will excite and inspire the home decor world. Maison&Objet's mission is to reveal talent, spark connections and provide inspiration, both on and offline, thereby helping businesses grow. Through two yearly trade fairs for industry professionals and Paris Design Week, a public event in September that brings the creative energy of designers and brands together in the City of Light, Maison&Objet is the go to platform for the entire interior design sector. Unveiled in 2016 Maison&Objet and more, or MOM, enables buyers and brands to continue their conversations all year round, launch collections and create connections beyond physical meetings. The weekly roundup of exciting new finds constantly stimulates business across the sector. To take things even further, the Maison&Objet Academy now provides industry professionals with an exclusive web channel that broadcasts monthly content focusing on training and on deciphering market trends. Our social media platforms, meanwhile, keep all those design discoveries going by engaging daily with an active community of almost one million members on Facebook, Instagram, Twitter, LinkedIn, Xing, WeChat and TikTok. As the spearhead of Paris as the capital of creativity, Maison&Objet is a catalyst for positioning Paris as one of the world's leading design centres.

**3 000**  
BRANDS

**60 000**  
VISITORS

# Press material available on :

Download images [here](#)

Password :

## MEDIA CONTACT

---

AUBE EVENTS  
Sonia Su  
Marketing & Communication Manager  
of Maison&Objet Design Award China  
T. +86 18046968481  
[sonia.su@aubeevents.com](mailto:sonia.su@aubeevents.com)

## CORPORATE CONTACTS

---

Committee of Maison&Objet Design  
Award China

T. 010-5359 1753

[candidates@modesignaward.com](mailto:candidates@modesignaward.com)

MAISON&OBJET

Franck Millot  
Partnerships & Special Events Director

Audrey Joly  
Partnerships & Special Events Senior Executive